

**28 Chedworth Crescent**

Portsmouth, PO6 4ET

**Asking price £220,000**



## 28 Chedworth Crescent

Portsmouth, PO6 4ET

Todd & Hartridge are delighted to offer this well presented three bedroom house in a popular location close to Queen Alexandra hospital.

It features a large living room with a bay window letting in lots of natural light.

The kitchen-diner is to the rear of the house and has a range of modern units as well as a range cooker. There is space for a dining table and there are double doors out to the rear garden.

Upstairs, the property has two large double bedrooms, the front bedroom having a built in wardrobe area, as well as a smaller third bedroom.

The family bathroom completes the accommodation and features a separate shower cubicle and bath as well as wc and wash basin.

There is an enclosed rear garden which is staggered over different levels and offers space to have outdoor dining. It also has rear access.

Offered with no onward chain, viewings by appointment.

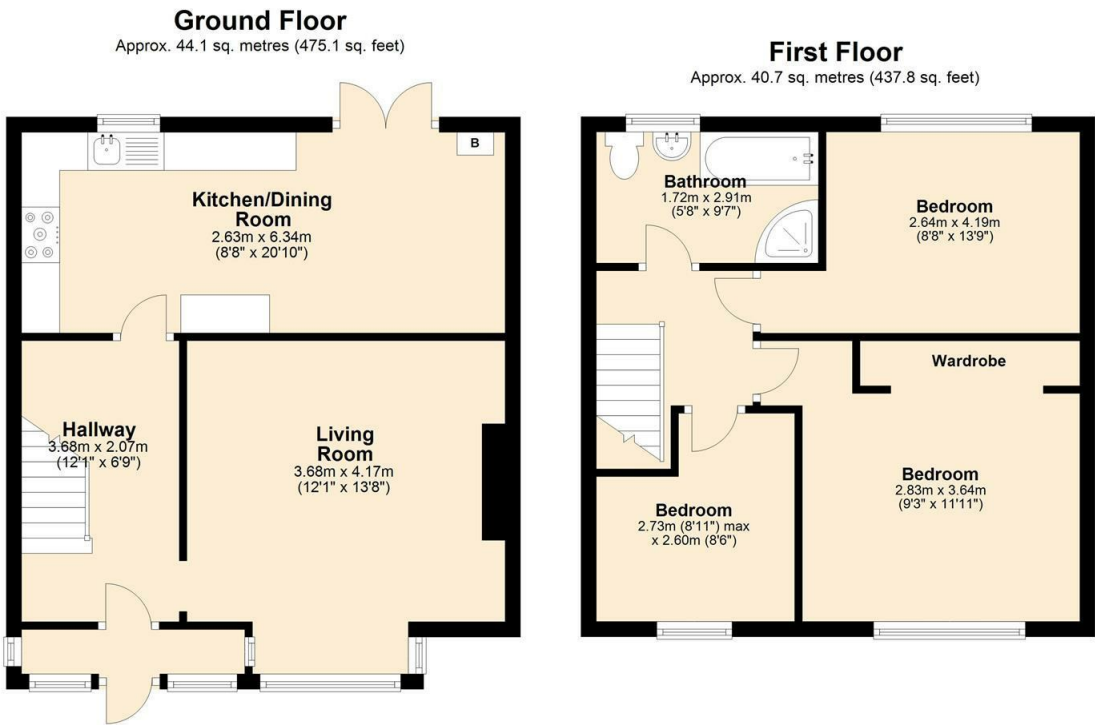








Floor Plan



Total area: approx. 84.8 sq. metres (913.0 sq. feet)

Viewing

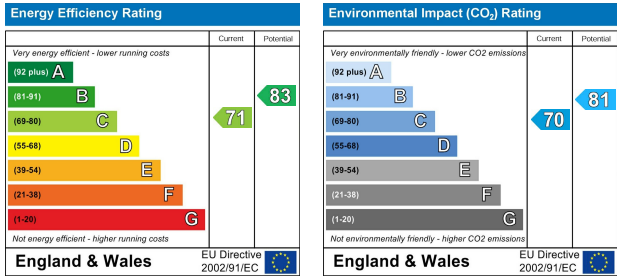
Please contact our Portsmouth Office on 023 9266 3366 if you wish to arrange a viewing appointment for this property or require further information.

These particulars, whilst believed to be accurate are set out as a general outline only for guidance and do not constitute any part of an offer or contract. Intending purchasers should not rely on them as statements of representation of fact, but must satisfy themselves by inspection or otherwise as to their accuracy. No person in this firms employment has the authority to make or give any representation or warranty in respect of the property.

Area Map



Energy Efficiency Graph



191 London Road, Portsmouth, PO2 9AH | Tel: 023 9266 3366 | Email: enquiries@toddandhartridge.co.uk

